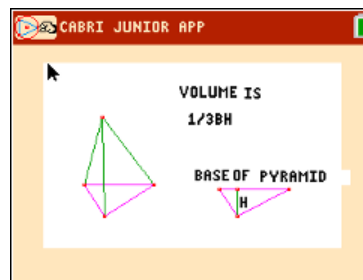




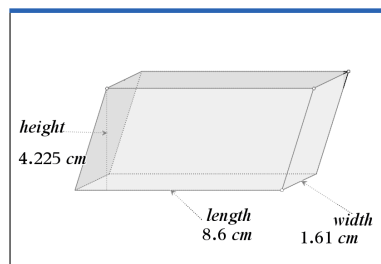
In this activity, students define right and oblique three dimensional figures and calculate the volume for prisms, pyramids, cylinders, and cones. They will use multiple representations to explore properties of area and volume. This investigation offers opportunities for review and consolidation of key concepts related to area and volume.



**Problem 1 – Rectangular Prisms**

Using the prism to the right, answer the following.

- Describe when the prism is a *right* prism.



- Describe when the prism is an *oblique* prism.
- Find the volume of the pictured rectangular prism. Record the dimensions of the prism below.

Base length = \_\_\_\_\_ (*l*)

Base width = \_\_\_\_\_ (*w*)

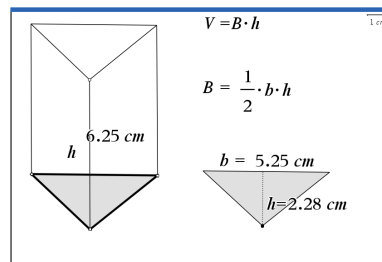
Area of the Base = \_\_\_\_\_ (*B*)

Prism height = \_\_\_\_\_ (*h*)

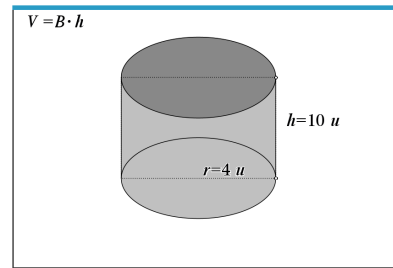
Prism Volume = \_\_\_\_\_ (*V*)

**Problem 2 – Triangular Prisms and Pyramids**

- Using the prism below, describe why it is called a *triangular prism*.







11. Record the dimensions below and find the volume of the pictured cylinder.

Circle radius = \_\_\_\_\_ ( $r$ )

Area of Circle = \_\_\_\_\_ ( $B$ )

Cylinder height = \_\_\_\_\_ ( $h$ )

Cylinder Volume = \_\_\_\_\_ ( $V$ )

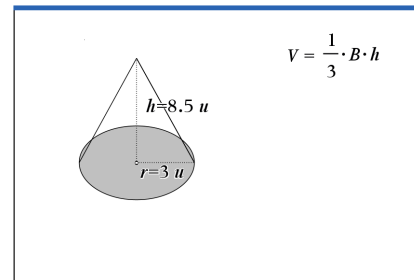
12. Find the volume of the cone pictured below. Record the dimensions of the cone below.

Circle radius = \_\_\_\_\_ ( $r$ )

Area of Circle = \_\_\_\_\_ ( $B$ )

Cone height = \_\_\_\_\_ ( $h$ )

Cone Volume = \_\_\_\_\_ ( $V$ )



13. If a cone and a cylinder have the same radius and the same height, describe how the volume of the cone is related to the volume of the cylinder.

Describe how this relates to the prism and pyramid formulas when the prism and the pyramid have the same base and the same height.



**Further IB Application**

Abigail is building a flower box out of a rectangular block of wood for her windowsill. She will take this block and carve out a cylindrical trough. See diagram below. The length of the flower box is 2.5 ft, the width is 0.5 ft, and the height is 0.6 ft. The cylindrical trough will have a diameter of 0.3 ft.

Find the volume of the flower box, after the trough has been carved out, in cubic inches.

Diagram not to scale.

