

Start-Up Customization Application for the TI-83 Plus

Getting Started

- Start here

How To...

- Customize with a Picture
- Customize with a Program
- Customize with an Application
- Turn Start-Up Customization Off

More Information

- Deleting Start-Up Customization
- Error Recovery
- Error Messages
- Customer Support



Important Information

Texas Instruments makes no warranty, either expressed or implied, including but not limited to any implied warranties of merchantability and fitness for a particular purpose, regarding any programs or book materials and makes such materials available solely on an “as-is” basis.

In no event shall Texas Instruments be liable to anyone for special, collateral, incidental, or consequential damages in connection with or arising out of the purchase or use of these materials, and the sole and exclusive liability of Texas Instruments, regardless of the form of action, shall not exceed the purchase price of this product. Moreover, Texas Instruments shall not be liable for any claim of any kind whatsoever against the use of these materials by any other party.

This graphing product application (APP) is licensed. See the terms of the [license agreement](#).

Copyright © 2000, 2001 Texas Instruments Incorporated.

What is the TI-83 Plus Start-Up Customization?

This application lets you determine what displays on the calculator screen when you first turn it on. You can set it up to

- display a picture
- run a program
- launch an application

The next time you turn the calculator on, Start-Up Customization runs automatically according to the settings you selected. You can change the settings at any time, or you can turn the application off. Any changes you make take effect the next time you turn the calculator on.

Note Start-Up Customization does not run after an Automatic Power Down™.

Where to Find Installation Instructions

You can find detailed instructions on installing Flash applications at education.ti.com/guides.

Customizing Start-Up with a Picture

You can customize the appearance of your calculator by recalling a Pic when you turn your calculator on. The picture can be a drawing created on the calculator or an image created on a computer. You can display any Pic stored in your calculator's RAM. (See chapter 8, "Draw Instructions" in the *TI-83 Plus Graphing Calculator Guidebook* (education.ti.com/guides) for more information about creating and saving Pics.)

Selecting Start-Up Customization

1. Press **[APPS]**. The APPLICATIONS menu is displayed.
2. Select **Start-up** from the menu. (Press the number corresponding to the menu option or press **⏮** to select the option, and then press **[ENTER]**.) The About screen is displayed.



3. Press **ENTER** to continue. The CHOOSE SETTINGS screen is displayed.



Choosing the Settings

Use **▶**, **◀**, **⬆**, or **⬇** to highlight the appropriate option, then press **ENTER** to select it.

1. Select **ON** for the Display setting
2. Select **PIC** for the Type setting.



3. Press **ENTER** at **NAME** to display the CHOOSE PICTURE menu.



4. Select the name of the picture you want to display. (A preview of the Pic is shown on the right side of the screen.) The CHOOSE SETTINGS screen is displayed.



5. Select **2**, **5**, or **KEY** for the TIME.
 - 2** displays the picture for 2 seconds.
 - 5** displays the picture for 5 seconds.
 - KEY** displays the picture until you press any key.
6. Select **PREVIEW** or press **[ZOOM]** to preview the picture, or select **FINISH** to complete the application set-up.

Running Start-Up Customization

1. Press **[2nd] [OFF]** to turn the calculator off.
2. Press **[ON]** to turn the calculator on and run the application.



Customizing Start-Up with a Program

You can set up your calculator to automatically run a program each time it is turned on. For example, you might want to reset your default settings, or display a word or quote of the day. You can choose any program that is stored in your calculator's RAM. (See chapter 16, "Programming" in the *TI-83 Plus Graphing Calculator Guidebook* (education.ti.com/guides) for more information about creating and saving programs.) The program runs in its entirety and then returns control of the calculator to the user.

Selecting Start-Up Customization

1. Press **[APPS]**. The APPLICATIONS menu is displayed.



2. Select **Start-up** from the menu. (Press the number corresponding to the menu option or press **⏴** to select the option, and then press **[ENTER]**.) The About screen is displayed.



3. Press **[ENTER]** to continue. The CHOOSE SETTINGS screen is displayed.



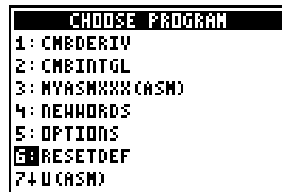
Choosing the Settings

Use **▶**, **⬇**, **⬅**, or **⬇** to highlight the appropriate setting, then press **[ENTER]** to select it.

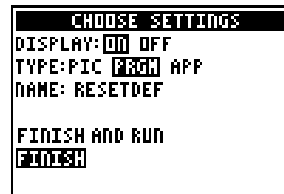
1. Select **ON** for the Display setting.
2. Select **PRGM** for the Type setting.



3. Press **[ENTER]** at **NAME** to display the CHOOSE PROGRAM menu.



4. Select the name of the program you want to run. The CHOOSE SETTINGS screen is displayed.



5. Select **FINISH AND RUN** to preview the program or **FINISH** to complete the application set-up.

Running Start-Up Customization

1. Press **[2nd] [OFF]** to turn the calculator off.
2. Press **[ON]** to turn the calculator on and run the application. The program runs in its entirety and then displays the program name and **Done** to indicate that control has been returned to the user.



Customizing Start-Up with an Application

If you use one application often, you can set up your calculator to automatically launch that application when you turn it on. You can launch any application that is stored in your calculator's RAM. The Start-Up application launches the application you select in set-up, displaying that application's home screen.

Selecting Start-Up Customization

1. Press **[APPS]**. The APPLICATIONS menu is displayed.



2. Select **Start-up** from the menu. (Press the number corresponding to the menu option or press **⏴** to select the option, and then press **[ENTER]**.) The About screen is displayed.



3. Press **[ENTER]** to continue. The CHOOSE SETTINGS screen is displayed.



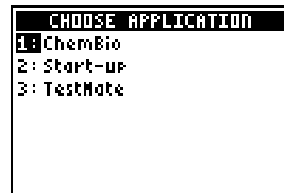
Choosing the Settings

Use **▶**, **⬇**, **◀**, or **⬅** to highlight the appropriate setting, then press **[ENTER]** to select it.

1. Select **ON** for the Display setting.
2. Select APP for the Type setting.



3. Press **[ENTER]** at **NAME** to display the CHOOSE APPLICATION menu.



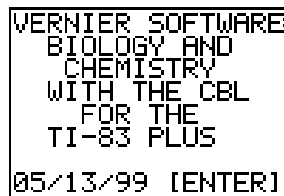
4. Select the name of the program you want to run. The CHOOSE SETTINGS screen is displayed.



5. Select **FINISH** to complete the application set-up.

Running Start-Up Customization

1. Press **[2nd] [OFF]** to turn the calculator off.
2. Press **[ON]** to turn the calculator on and run the Start-Up Customization application. The application you selected is launched and its home screen is displayed.



Turning Start-Up Customization Off

Turning the Start-Up Customization application off does not erase your settings. The next time you turn the application on, your previous settings are displayed. These settings, of course, can be changed.

1. Press **[APPS]**. The APPLICATIONS menu is displayed.



2. Select **Start-up** from the menu. (Press the number corresponding to the menu option or press **⏏** to select the option, and then press **[ENTER]**.) The About screen is displayed.



3. Press **[ENTER]** to continue. The CHOOSE SETTINGS screen is displayed.
4. Select **OFF** for the Display setting.
5. Select **FINISH**. The next time you turn the calculator on, Start-Up Customization will not run.



Deleting Start-Up Customization from the TI-83 Plus

Note If you choose to reset **All RAM** or **Arc Vars**, the application is unaffected. If you reset **Apps** or **All Memory**, the application is deleted.

To delete the application from your calculator:

1. Press $\boxed{2\text{nd}}$ $\boxed{[\text{MEM}]}$ to display the MEMORY menu.
2. Select **2:Mem Mgmt/Del....**
3. Use \blacktriangleleft or \blacktriangleright to select **Apps....**
4. Use \blacktriangleleft or \blacktriangleright to highlight the application you want to delete.
5. Press $\boxed{[\text{DEL}]}$.
6. Select **2:Yes.**

Error Recovery Instructions

Low Battery Condition

Do not attempt a Flash download if the low-battery message appears on the calculator. Low battery indication is shown on the initial screen. If you receive this error during an installation, change the batteries before trying again.

Check Amount of Flash Application Free Space

1. Press **2nd** [MEM].
2. Select **2:MEM MGMT/DEL...**

Each application requires at least 16,535 bytes of ARC FREE.

Archive Full

This error appears when the TI-83 Plus does not have sufficient memory for the application. In order to make room for another application, you must delete an application and/or archived variables from the TI-83 Plus. Before deleting an application from the TI-83 Plus, you can back it up by using the **Link > Receive Flash Software...** menu in TI-GGRAPH LINK™ for the TI-83 Plus. Once saved, you can reload it to the TI-83 Plus later using the **Link > Send Flash Software** menu in TI-GGRAPH LINK.

Communication Error

This error indicates that the Flash Installer is unable to communicate with the TI-83 Plus. The problem is usually associated with the TI-GGRAPH LINK cable and its connection to the TI-83 Plus and/or to the computer. Make sure the cable is firmly pushed in to the calculator and the computer.

If this does not correct the problem, try a different TI-GGRAPH LINK cable and reboot your computer. If you continue to get this error, please contact [TI-CARES™](#).

Validation Error

This calculator does not have a certificate to run the application, or electrical interference caused a link to fail.

Checksum Error

Exit the installer and try it again. If this problem persists, contact TI-Cares.

Other Errors

See pages B-6 through B-10 in the TI-83 Plus manual (education.ti.com/guides) for information about the specific error, or contact [TI-CARES](#).

Start-Up Customization Application Errors

AppVars

This application saves the user settings and other important information in AppVars (a built-in calculator data type) named **STARTUPD** and **OFFSCRPT**. Both of these AppVars must remain on the calculator in order for the application to run correctly.

If **STARTUPD** is archived, the application attempts to unarchive it. If there is not enough RAM to unarchive it, the application displays an error message and does not run. To correct this problem, delete or archive items stored in RAM and run the application again.

CAUTION! Do not archive **OFFSCRPT**. Archiving **OFFSCRPT** may lock up the calculator or cause all RAM to be erased.

Error Messages

If you see this error message...

Follow these instructions

PROGRAM: (name) IS
ARCHIVED

The program you have selected is archived. To correct the problem, manually unarchive the program:

1. Press **[2nd]** **[MEM]**.
 2. Select **2:MEM MGMT/DEL...**
 3. Use **⏪** or **⏩** to select **Prgm.**
 4. Use **⏪** or **⏩** to highlight the program you want to unarchive. An archived program has an asterisk (*) next to it.
 5. Press **[ENTER]**.
 6. Press **[2nd]** **[QUIT]**.
-

If you see this error message...	Follow these instructions
INVALID APPVAR 'STARTUPD'	<p>The data in this AppVar has been corrupted or has been created by another program. To correct the problem, manually delete the AppVar:</p> <ol style="list-style-type: none"> 1. Press [2nd][MEM]. 2. Select 2:MEM MGMT/DEL... 3. Use ⏪ or ⏩ to select AppVars. 4. Use ⏪ or ⏩ to highlight the AppVar you want to delete. 5. Press [DEL]. 6. Select 2:Yes.
PICTURE: (name) DOES NOT EXIST	<p>The picture you selected does not exist. Select a different picture.</p>
PROGRAM: (name) DOES NOT EXIST	<p>The program you selected does not exist. Select a different program.</p>
NO PICTURES IN MEMORY	<p>No pictures are stored on the calculator. Create pictures and save them on the calculator. The pictures can be saved in RAM or they can be archived.</p>
NO PROGRAMS IN RAM	<p>No programs are stored in the calculator's RAM. Either move archived programs into RAM or create programs and save them in RAM.</p>

Miscellaneous

If you obtain new or upgraded base code for your TI-83 Plus, you may need to provide your current base code version and/or the serial number of your unit. It is good to know your base code and application version numbers in case you have difficulties with your TI-83 Plus and need to contact technical support. Knowing these version numbers may make it easier to diagnose the problem.

Verify Base Code Version and Serial Number

1. Press **2nd** **[MEM]**.
2. Select **1:ABOUT**.

The version number has the format x.yy. The serial number appears on the line beneath the product ID number.

Verify Flash Application Version

1. Press **[APPS]**.
2. Select **Start-up**.

The version number of the application appears on the initial screen.

Texas Instruments (TI) Support and Service Information

For general information

E-mail: ti-cares@ti.com

Phone: 1-800-TI-CARES (1-800-842-2737)
For US, Canada, Mexico, Puerto Rico, and
Virgin Islands only

Home page: education.ti.com

For technical questions

Phone: 1-972-917-8324

For product (hardware) service

Customers in the US, Canada, Mexico, Puerto Rico, and Virgin Islands: Always contact TI Customer Support before returning a product for service.

All other customers: Refer to the leaflet enclosed with your product (hardware) or contact your local TI retailer/distributor.

End-User License Agreement

BY INSTALLING THIS SOFTWARE YOU AGREE TO ABIDE BY THE FOLLOWING PROVISIONS.

1. **LICENSE:** Texas Instruments Incorporated (“TI”) grants you a license to use and copy the software program(s) (“License Materials”) contained on this diskette/CD/web site. You, and any subsequent user, may only use the Licensed Materials on Texas Instruments calculator products.
2. **RESTRICTIONS:** You may not reverse-assemble or reverse-compile the Licensed Materials. You may not sell, rent, or lease copies that you make.
3. **COPYRIGHT:** The Licensed Materials and any accompanying documentation are copyrighted. If you make copies, do not delete the copyright notice, trademark, or protective notices from the copies.
4. **WARRANTY:** TI does not warrant that the Licensed Materials or documentation will be free from errors or that they will meet your specific requirements. **THE LICENSED MATERIALS ARE PROVIDED “AS IS” TO YOU OR ANY SUBSEQUENT USER.**
5. **LIMITATIONS:** TI makes no warranty or condition, either expressed or implied, including but not limited to any implied warranties of merchantability and fitness for a particular purpose, regarding the Licensed Materials.

IN NO EVENT SHALL TI OR ITS SUPPLIERS BE LIABLE FOR ANY INDIRECT, INCIDENTAL, OR CONSEQUENTIAL DAMAGES, LOSS OF PROFITS, LOSS OF USE OR DATA, OR INTERRUPTION OF BUSINESS, WHETHER THE ALLEGED DAMAGES ARE LABELED IN TORT, CONTRACT, OR INDEMNITY.

SOME STATES OR JURISDICTIONS DO NOT ALLOW THE EXCLUSION OR LIMITATION OF INCIDENTAL OR CONSEQUENTIAL DAMAGES, SO THE ABOVE LIMITATION MAY NOT APPLY.

IF YOU AGREE TO BE BOUND BY THIS LICENSE, CLICK ON THE “ACCEPT” BUTTON; IF YOU DO NOT AGREE TO BE BOUND BY THIS LICENSE, CLICK ON THE “DECLINE” BUTTON TO EXIT THE INSTALLATION.

Page Reference

This PDF document contains electronic bookmarks designed for easy on-screen navigation. If you decide to print this document, please use the page numbers below to find specific topics.

Important Information.....	2
What is the TI-83 Plus Start-Up Customization?	3
Where to Find Installation Instructions.....	4
Customizing Start-Up with a Picture	5
Customizing Start-Up with a Program.....	8
Customizing Start-Up with an Application	11
Turning Start-Up Customization Off.....	14
Deleting Start-Up Customization from the TI-83 Plus	15
Error Recovery Instructions.....	16
Start-Up Customization Application Errors.....	19
Miscellaneous	22
Texas Instruments (TI) Support and Service Information	23
End-User License Agreement.....	24